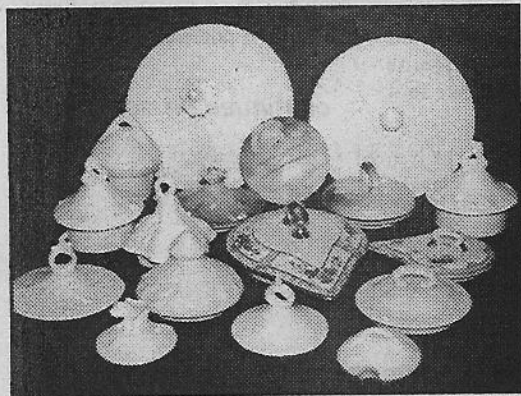


Continued from previous page

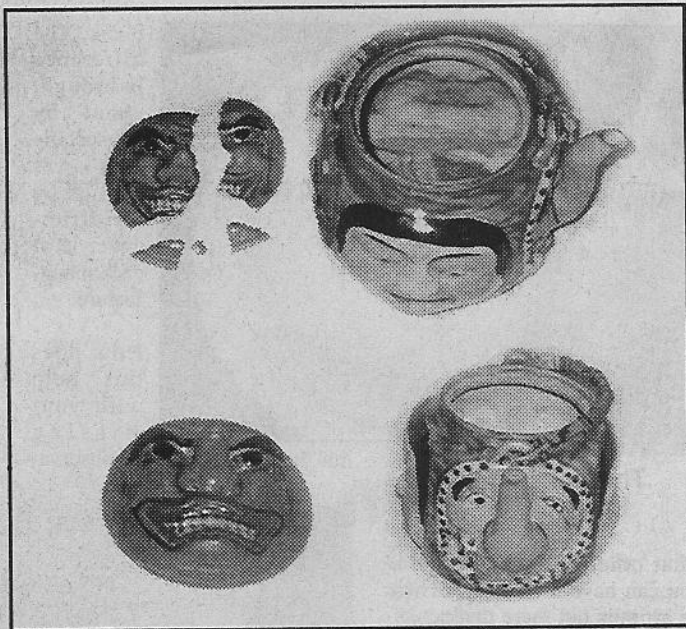
sometimes be the best for porcelain since it can be transparent, and it has a high resonant "ring". How? Well, you can select a glass or crystal lid and coat it with a porcelain slip or anneal paint it with a porcelain process that will give you that egg shell look with just the right ring.

For more information on the many creative ideas available to make the best use of what you may already have available to solve many problems such as a missing lid, handle, flower, hand, head, and other part, visit my website at www.TindellsRestorationSchools.com.



Various lids that are repros in blank and fired blank form. Others are originals to be faux finished to match lid-less pots or to make mother mold copies.

DiAnna Tindell is a professional master restoration specialist, internationally trained in many areas such as hot and cold glass, porcelain, and pottery. She is the founder of TINDELL'S RESTORATION SCHOOLS in Nashville, TN. She is a published columnist



Some lids can't be re-created and must be restored.

in many antique trade papers/magazines and has authored three books on restoration. DiAnna will be holding several seminars in the coming months: at the R.S. Prussia International Convention to be held in Lexington, KY, Aug. 1-4; and five seminars at the Antiques Weekend in Somerset, NJ, Aug. 9-11. Visit her website for more information.