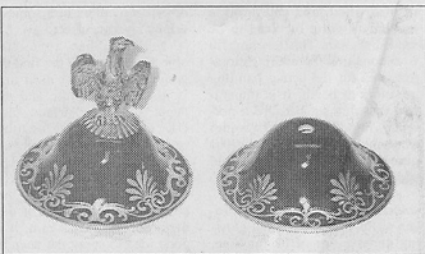


Restoring...continued

achieve the perfect surface.

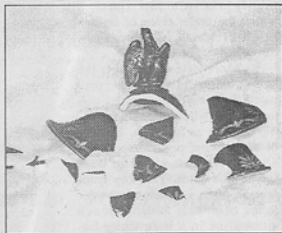
One important factor to practice and be aware of in the final applications of this cobalt blue pigment gloss glaze is to avoid too much airbrush over spray. The area that you are attempting to coat for an exact match of the adjoining surface areas will need several coats to achieve depth. The problem with this is that any "over spray" coating over the outer connecting areas will also be receiving this layering. If the over spray isn't contained in the direction of center of the restore area, then any outer diameters may become even darker than the restore area and the original surface. Therefore, you will have a sort of "darker" ring or border areas between the newly restored area



Urn lid repaired.

and the original surface matches.

An experienced restorer will avoid over spraying or coating more than is required to force all areas to match on the object. Many times an object can be "over



Study layering of colors on broken edges to match colors.

done" in that too much of the original surface has been changed to meet the look of the restored area. Your efforts should be focused on restoring the damaged area rather than changing an original surface. A high gloss shine is not always possible with a pigmented

gloss glaze. Often, it is necessary to apply several additional coats of "clear" gloss to bring the final shine up to the right depth.

DiAnna Tindell is a professional master restoration specialist, internationally trained in many areas such as hot and cold glass, porcelain, and pottery. She is the founder of TINDELL'S RESTORATION SCHOOLS in Nashville, TN. She is a published columnist in many antique trade papers/magazines and has authored (3) books on restoration.

Tindells Restoration Schools will appear on HGTV as a feature soon. Visit the web site: www.TindellsRestorationSchools.com for upcoming events, training programs, appraisal and restoration services, videos, books and products.